

# 105/16-15 MED

#2 Ideal blade and head is recommended

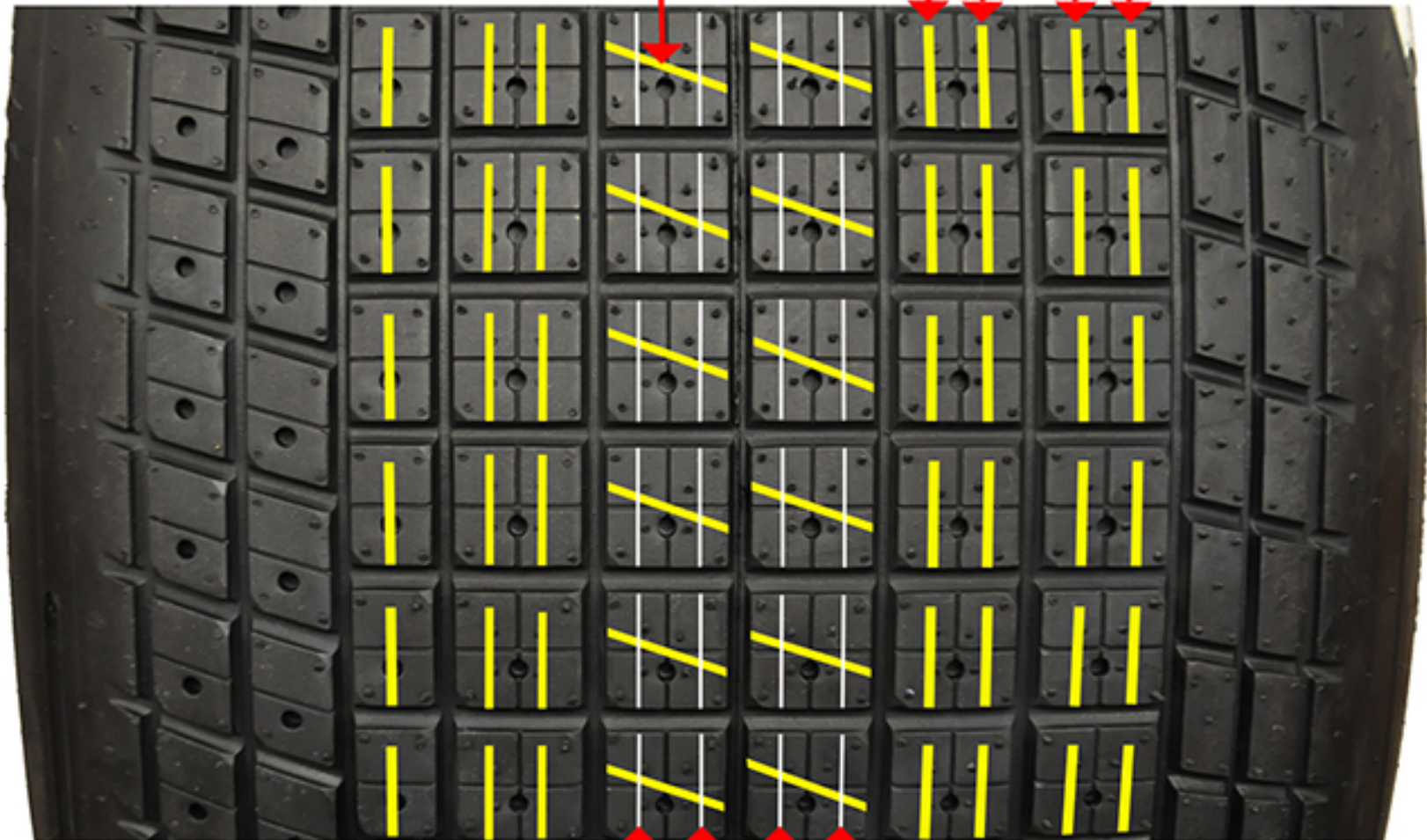
High heat, fast track conditions

## Narrow circumferential grooves

do not groove through the leading edge.

This will help maintain a sharp leading edge.

Angle groove approximately 15 to 20 degree angle.



(Inside of tire)

(Outside of tire)

Narrow circumferential sipes. Approximately half depth.

### Notes:

-Circumferential siping and grooving helps dissipate heat.

Also helps with sidebite.

-Cross grooving helps with forward bite and removing loose dirt.

Yellow = Groove  
White = Sipe